



GAT MONTHLY MEMBERSHIP PROGRESS REPORT

Results as of: 1/31/2023

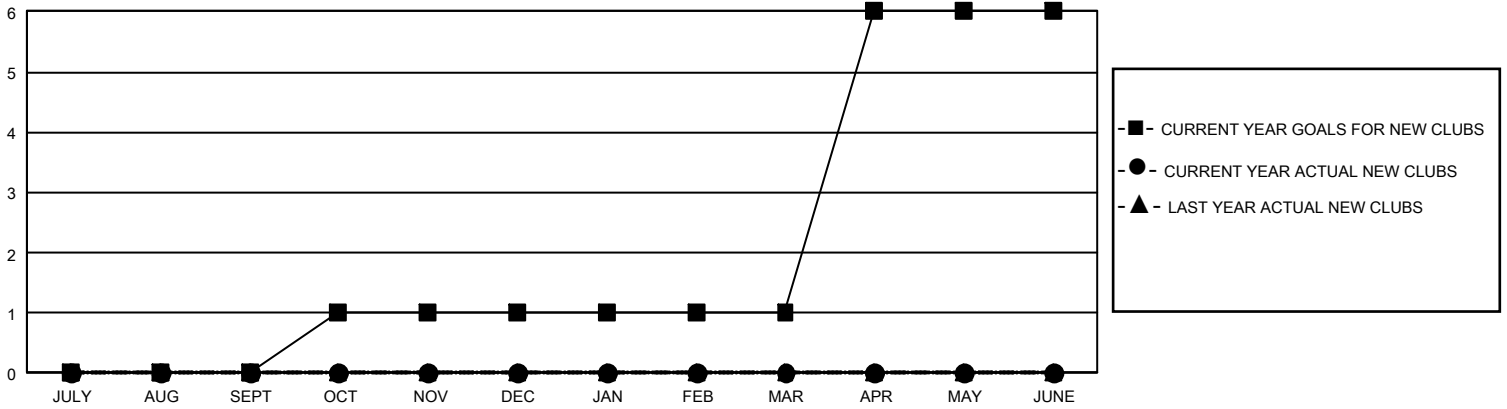
GMT Constitutional Area 7, Group B

REPORT DOES NOT INCLUDE CLUBS IN UNDISTRICTED AREAS.

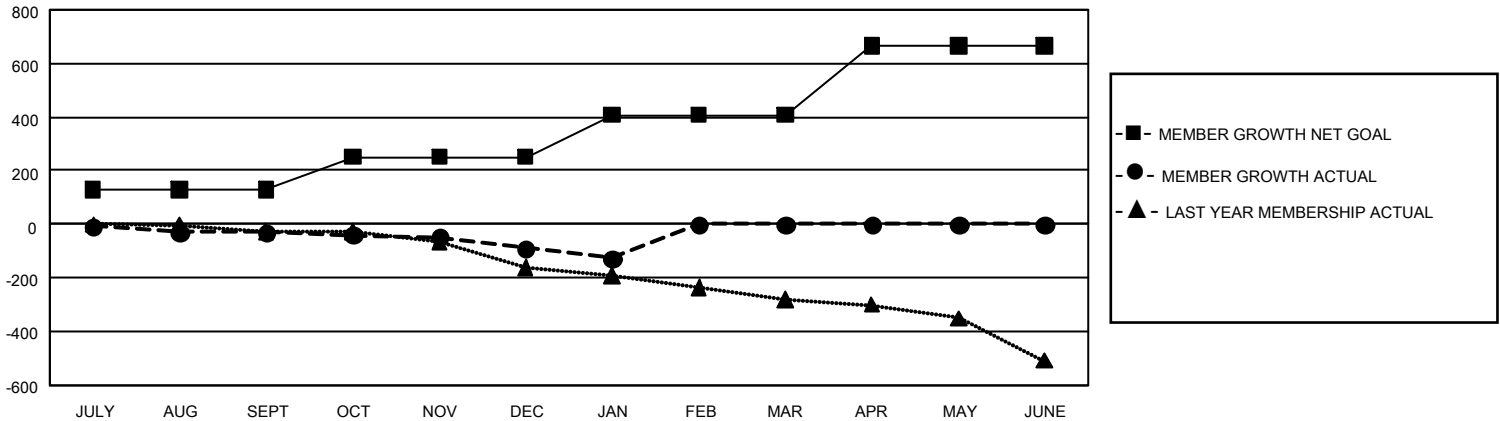
| Clubs | | | |
|-----------------------|---------------|-----------|---------------|
| RESULTS FOR 2022-2023 | | | |
| QUARTER | NEW CLUB GOAL | NEW CLUBS | DROPPED CLUBS |
| JULY/AUG/SEPT | 0 | 0 | 3 |
| OCT/NOV/DEC | 3 | 0 | 2 |
| JAN/FEB/MAR | 0 | 0 | 0 |
| APR/MAY/JUNE | 15 | 0 | 0 |

| Members | | | |
|-----------------------|------------------------|----------------------|--|
| RESULTS FOR 2022-2023 | | | |
| QUARTER | MEMBER GROWTH NET GOAL | MEMBER GROWTH ACTUAL | DROPPED MEMBERS ACTUAL (including transfers) |
| JULY/AUG/SEPT | 128 | 160 | 161 |
| OCT/NOV/DEC | 123 | 166 | 216 |
| JAN/FEB/MAR | 157 | 34 | 63 |
| APR/MAY/JUNE | 257 | 0 | 0 |

GOALS AND ACTUAL NEW CLUBS CUMULATIVE



GOALS AND ACTUAL MEMBERS CUMULATIVE



| | | | |
|---|--|--|-------------------------------------|
| DROPPED CLUBS: 5 | 148 CLUBS OF 310 ADDED 1 OR MORE NEW MEMBERS | <u>GENDER DISTRIBUTION</u> | |
| | | MALE 5,391 (67.52%) FEMALE 2,592 (32.46%) NON BINARY 1 (0.01%) PREFER NOT TO ANSWER 0 (0.00%) | |
| <u>DROPPED MEMBERS</u> | | CLICK HERE FOR CUMULATIVE MEMBERSHIP DATA | TOTAL FAMILY UNIT MEMBERS 768 |
| DECEASED 83 CLUB CANCELLED 19 OTHER 340 TOTAL 442 | | | FAMILY MEMBERS PAYING HALF DUES 387 |